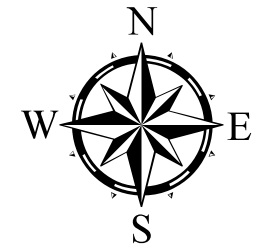
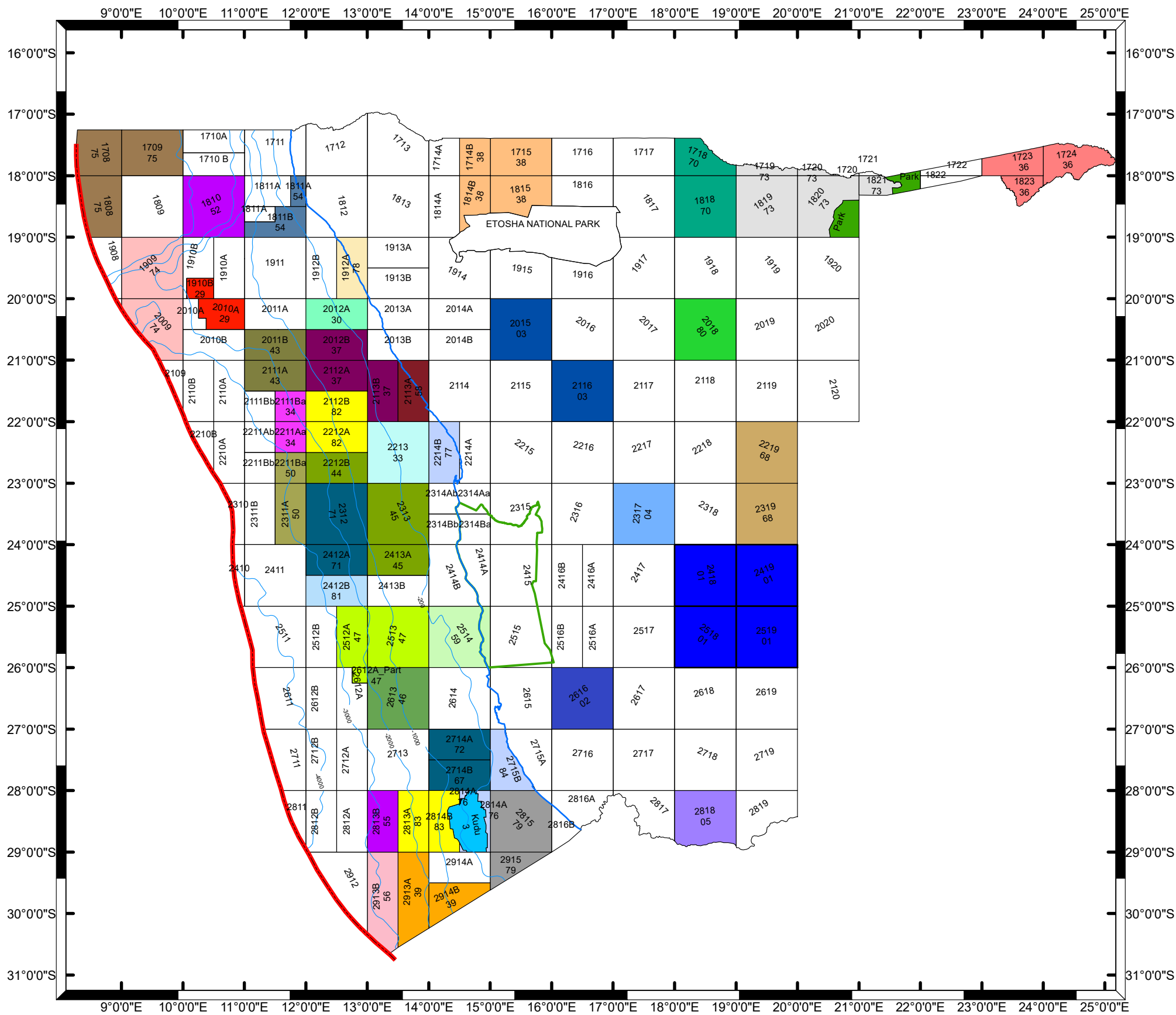


HYDROCARBON LICENSE MAP



Legend

- Limit Exclusive Economic Zone
- Isobath
- Shore line
- Etosha national Park
- World Heritage Zone

Production License

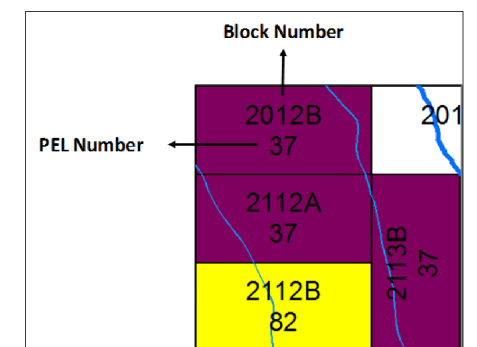
- (PEL 3) NAMCOR

Exploration License

- (PELs 50) Pan African Oil Namibia
- (PEL 46) Murphy Oil / OMV / Cowan
- (PEL 36) CSG Energy Namibia
- (PELs 30, 33) Eco Oil & Gas
- (PELs 67, 71, 72) Enigma Oil and Gas
- (PEL 49) Frontier Resources Namibia
- (PEL 52, 55) Grisham Assets Corp
- (PEL 38) Hydrocarb Namibia Energy Corp
- (PEL 56) Impact Oil and Gas
- (PEL 29) Jupiter Petroleum Namibia
- (PEL 59) Lekoil E&P
- (PELs 44, 45) Maurel & Prom Namibia
- (PEL 58) Nabirm Energy Services
- (PELs 43) Oranto Petroleum
- (PEL 34) Azinam Limited
- (PEL 39) Shell Exploration & Production
- (PEL 47) Serica Energy Namibia
- (PEL 37) Tullow Kudu / Pancontinental
- (PEL 68) Alumni Expl East Namibia
- (PEL 70) ACREP-Exploracao Petrolifera
- (PEL 73) Reconnaissance Energy
- (PEL 74) Tse Oil & Gas
- (PEL 75) Camelot Investment Group
- (PEL 76, 77, 84) Rhino resources
- (PEL 78) Global Oil and Gas
- (PEL 79) Windfire Petroleum
- (PEL 80) Methacarb Investments
- (PEL 81) Sungu Sungu
- (PEL 82, 83) Galp Energia

Reconnaissance License

- SOAR ENERGY NAMIBIA
- TRISTONE AFRICA NAMIBIA
- ATLANTIC PETROLEUM
- OSHIKOTO POWER



For further information:

www.namcor.com.na
www.mme.gov.na

Updated: 23 Feb 2017

